



- Guide Bushings
- Main Spindle Collets
- Sub - Spindle Collets
- Carbide Lined Collets
- Special Collets
- Bar Feed Collets



High Precision Collets & Guide Bushings For Swiss Type CNC Automatic lathes

Machines - Maschinen - Macchine

CITIZEN

Cincom

Miyano

stair

TORNOS 

NEXTURN
SWISS TURN LEADER


TSUGAMI

 Hanwha

DOOSAN

NOMURA


MAIER

INDEX
TRAUB

GILDEMEISTER



PO LY GIM

MANURHIN KMX

 HARDINGE

 JINN FA

THE ULTIMATE MACHINING POWER
WOODWAY

Strohm

Petermann

*André Bechler SA
Moutier*

 EWAG

ANCA

 **ROLLOMATIC**

Manufacturers of
Hi-Precision Collets, Carbide Lined Guide Bushes
for Swiss type Automatic Lathes



CITIZEN-CINCOM, TSUGAMI, STAR, TORNOS, TORNOS-DECO, TORNOS-DELTA,
GILDEMEISTER, HARDINGE, HANWHA, INDEX, NEXTURN, MAIER,
MANURHIN-KMX, MIYANO, NOMURA, POLYGIM, TRAUB, BECHET, BECHLER,
PETERMAN, STROHM, GAUTHIER, GOODWAY, JIN-FA.



Collet - Smooth Bore

- Standard upto $\text{\O} 7.9\text{mm}$ Bore
- Bigger Bore Sizes also Available in Smooth - on request
- Available in Standard Precision and Extra Precision



Collet - Grooved Bore

- Standard Grooved Bores Available from $\text{\O} 8.0\text{mm}$
- Used Especially in Headstock



Collet - Profile Bore

- All profiles like Hexagon, Square, Rectangular, etc.,
- Available in all standard collet models



Collet - Serrated Bore

- Horizontal and Vertical Grooves
- Available from Bore $\text{\O} 8.00\text{mm}$ above.



Collets with Carbide Insert

- For long life and endurance.
- All Standard Collets are available with Carbide Insert



Collet - Stepped Bores

- Clamping on Two Different Diameters Possible
- Available for All Collet Types



Collet - Over Gripping

- Suitable for Clearing a shoulder and Gripping on a Smaller Diameter Beyond
- Used on a Pick-off Spindle



Collet Special Profile

- Suitable for Different Special Profiles and Partial Shapes.



Collets - V Line

- No marks on material while clamping
- Suitable for all profiles like Square, Hexagon, etc.,
- Uniform High Tension
- Easier Cleaning after Operation



Long Nose Collet - Straight Nose

- All Standard Collets available with Long Straight Nose
- Used on a Pick-off Spindle



Long Nose Collet - Tapered Nose

- All Standard Collets available with Long Tapered Nose
- Used on a Pick-off Spindle



Collet with Full Seal (Silicone Seal)

- Slots filled with silicone sealant to prevent chip and dirt debris entering inside the collets
- Mainly used on a Pick-off Spindle



Collet with Key Slot on Cone

- Key Slot on Cone made on request
- Key Slot on Cone is for profile orientation
- Suitable for all profiles like Hexagon, Square, etc..



Collet with Key Slot on Guiding Diameter

- Key Slot on Guiding Diameter made on request
- Key Slot on Guiding Diameter is for profile orientation
- Suitable for all profiles like Hexagon, Square, etc.,



SW Collet - Standard Nose

- Suitable for Tool Grinding machines and Schaublin Lathes
- Available in Standard Precision and Ultra Precision



SW Collet - Long Nose

- Suitable for Tool Grinding machines
- Available in Standard Precision and Ultra Precision



Guide Bush - Drawn (Adjustable) Type

- Suitable for Swiss type CNC automatic lathes
- Excellent Bore finish
- Bore surface finish - Ra value of 0.4 micron
- Standard Bore Chamfer on the bore edge



Guide Bush - Profile

- All Standard Guide Bushes available with Profiles like Hexagon, Square and Special partial shapes



Guide Bush - Reinforced Shank

- Special Guide Bush for Citizen and Star Swiss type CNC automatic lathes
- Excellent Bore finish
- Bore surface finish - Ra value of 0.4 micron
- Standard Bore Chamfer on the bore edge



Guide Bush - Traub

- Special Guide bush for Traub swiss type CNC automatic lathes
- Excellent Bore finish
- Bore surface finish - Ra value of 0.4 micron
- Standard Bore Chamfer on the bore edge



Guide Bush - Long Nose

- Shifting the Guiding area forward and thereby enhancing the stability of the workpiece
 - Excellent Bore finish
 - Bore surface finish - Ra value of 0.4 micron
 - Standard Bore Chamfer on the bore edge
-



Guide Bush - U Line

- Slot Designed not to allow chip and dirt debris inside the Guide Bush
 - Available only in Ultra Precision
 - Suitable for all profiles like Square, Hexagon, etc.,
 - Smooth Guiding
 - No marks on material while guiding
-



Bar Feed Collet - External Thread

- Specially processed to obtain uniform tension
-



Bar Feed Collet - Internal Thread

- Specially processed to obtain uniform tension
-



Bar Feed Collet - Pin Type

- Specially processed to obtain uniform tension

Guide Bushing with Extended Carbide Insert (Max Land Guide Bushing)



Standard Guide Bush

Max Land Guide Bushing

Guide Bush with Extended Carbide Insert (Max Land Guide Bushing)

- Guiding surface length up to 70mm
- Bore Diameter from 4mm to 42mm
- Guiding surface length will vary depending on bore diameter and guide bush model
- Suitable for components which require long drawing back like chasing a long thread
- High concentricity
- Extended carbide insert ensures improved guidance of component
- Prevents slippage of component from the carbide guide

Guide Bushing with Carbide Insert

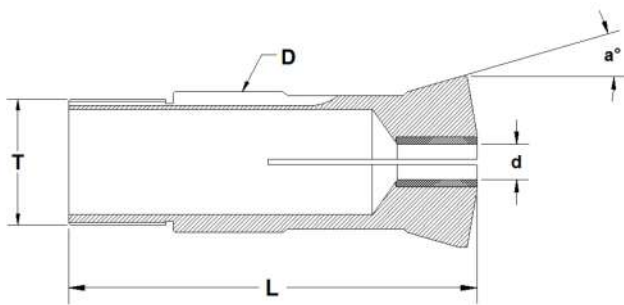


Figure - 1 Carbide Lined Guide Bush - Drawn type

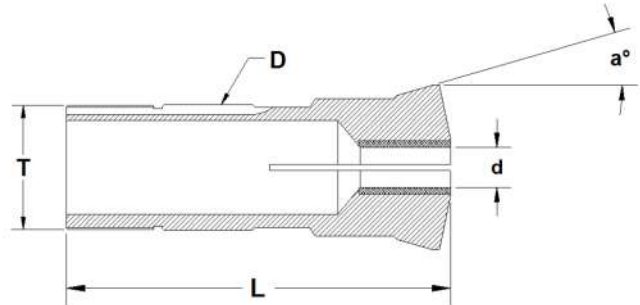


Figure - 2 Carbide Lined Guide Bush - with Reinforced Shank

Guide Bush - Drawn (Adjustable) Type

All Dimension are in mm - Unless Otherwise Specified

Tecnicrafts Part No.	Figure	Guiding Dia	Total Length	Thread	Angle	Capacity		
						Round	Hexagon	Square
		ØD	L	T	a°	●	⬡	■
UR9-101	1	9	44	M8x0.75	16°	5	4	3
UR11-102	1	11	53	M10x0.75	16°	6	5	4
UR11-103	1	11	52.5	M10x0.75	16°	7	5	4
UR14-104	1	14	61.5	M14x1	15°30'	8.5	7	6
UR16-105	1	16	63	M14x1	15°30'	10	8	7
UR16-106	1	16	60	M14x1	16°	10	8	7
UR16-107	1	16	59	M16x1	16°	10	8	7
UR18-108	1	18	60	M18x1	30°	12.5	10	9
UR18-109	2	18	100	M18x1	20°	13	11	9
UR21-110	1	21	57.5	M18x1	12°30'	12.5	10	9
UR21-111	1	21	65.5	M18x1	12°	14	11	9
UR22-112	1	22	70	M20x1	15°	15	12	10
UR22-113	1	22	68	M19x1	16°	14	11	9
UR22-114	1	22	68	M22x1	16°	16	14	11
UR23-115	1	23	72	M22x1	16°	17	14	11
UR24-131	1	24	61	M24x1	30°	16	13	11
UR26-116	1	26	77	M25x1	16°	20	17	14
UR28-117	1	28	82	M25x1	30°	20.5	17	14
UR28-118	1	28	82	M25x1	16°	20.5	17	14
UR28-119	1	28	82	M25x1	16°	20.5	17	14
UR30-120	1	30	68	M30x1	15°30'	20	17	14
UR32-121	1	32	70	M32x1	30°	22	19	15
UR33-122	1	33	70	M30x1	16°	25	21	18

* table to be continued

Guide Bushing with Carbide Insert

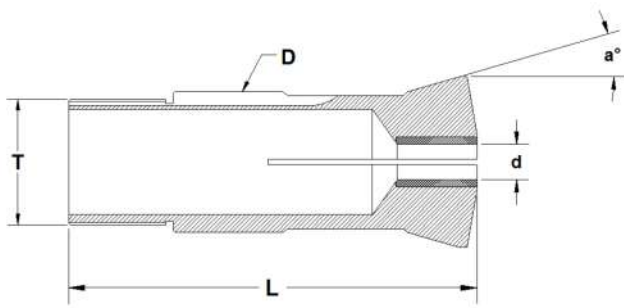


Figure - 1 Carbide Lined Guide Bush - Drawn type

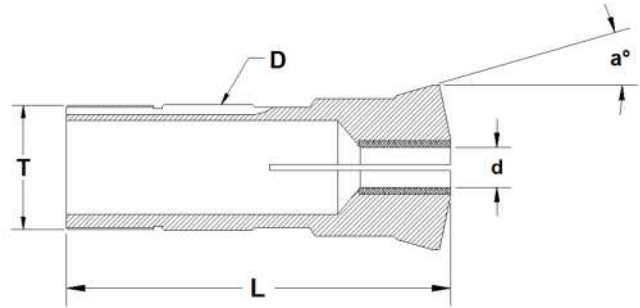


Figure - 2 Carbide Lined Guide Bush - with Reinforced Shank

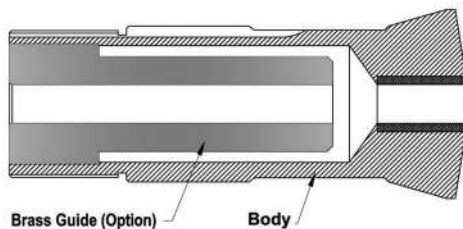
Guide Bush - Drawn (Adjustable) Type

All Dimension are in mm - Unless Otherwise Specified

Tecnicrafts Part Nr.	Figure	Guiding Dia ØD	Total Length L	Thread T	Angle a°	Capacity		
						Round	Hexagon	Square
UR34-123	1	34	87.5	M34x1	10°	27	22	18
UR36-124	1	36	90	M36x1	13°	25	21	18
UR41-125	1	41	54	M38x1	10°	32	27	22
UR42-126	1	42	82	M40x1	16°	33	28	23
UR42-127	1	42	82	M40x1	20°	33	28	23
UR45-128	1	45	82	M42x1	16°	36	30	25
UR46-129	1	46	92	M45x1	16°	38	32	26
UR48-130	1	48	82	M46x1	16°	39	33	27
UR52-132	1	52	99	M48x1.5 LH	10°	43	37	30

Guide Bush - Drawn (Adjustable) Type

- Suitable for Swiss type CNC automatic lathes
- Excellent Bore finish
- Bore surface finish - Ra value of 0.4 micron
- Standard Bore Chamfer on the bore edge
- Customized Solutions can be made for All Guide Bushings



Guide Bush with Brass Guide

- All the Guide Bushes available with Brass Guide on Request
- Brass Guide provides better guidance to the job

Collet with Straight & Tapered Shoulder

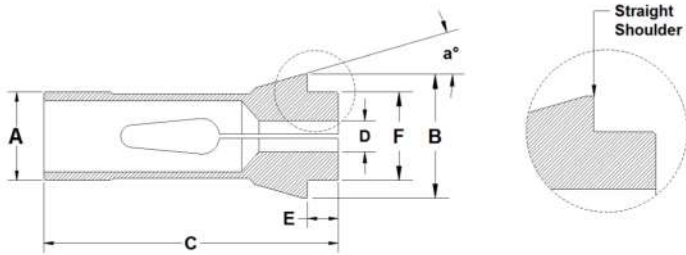


Figure - 1 Collet with Straight Shoulder

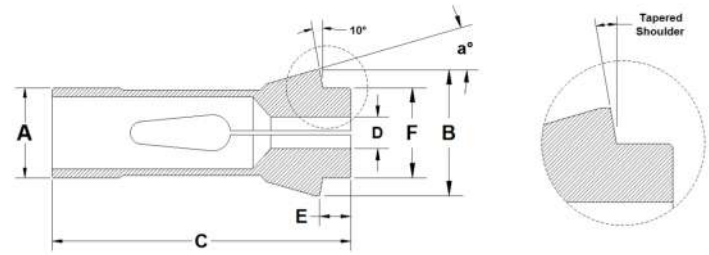


Figure - 2 Collet with Tapered Shoulder

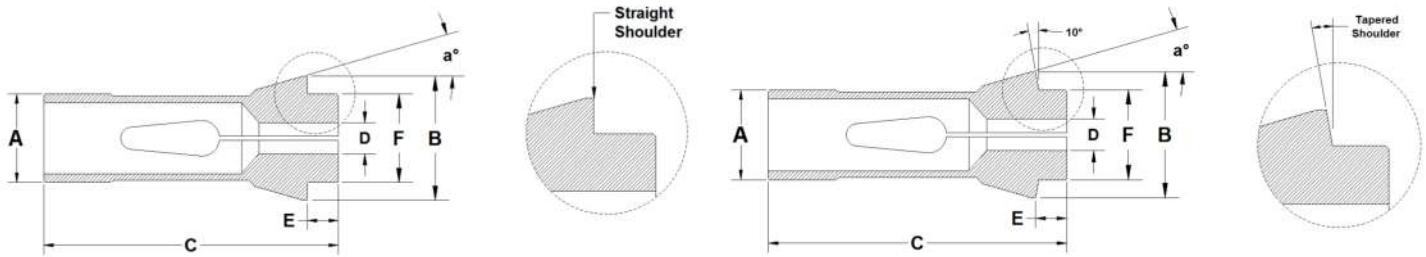
Collet with Straight & Tapered Shoulder

All Dimension are in mm - Unless Otherwise Specified

Tecnicrafts Part Nr.	Fig.	Guiding Dia	Major Dia	Total Length	Nose Length	Nose Dia	Angle	Capacity		
								Round	Hexagon	Square
		ØA	ØB	C	E	ØF	a°	●	⬡	■
USF8-8001	1	8	12	41	3.5	8	16°	5.5	4	3
USF10-8002	1	10	16	47	5	10	20°	7	5	4
USF13-8003	1	13	19	64	6	13	16°	10	8	7
USF15-8004	1	15	21	64	6	15	16°	11	9	8
USF16-8005	1	16	21	64	6	16	16°	12	10	8
USF20-8006	1	20	26	54	5	19	15°	16	13	11
USF20-8007	1	20	28	67	7	21	16°	16	13	11
USF22-8008	1	22	30	55	6	21	15°	16.5	14	11
USF23.8-8009	1	23.8	28	62	7	22	15°	18	15	12
USF25-8010	1	25	35	77	10	27	16°	20	17	14
USF25-8011	1	25	34	65	6	25	15°	20	17	14
USF26-8012	1	26	36	72	12	28	15°	21.0	17	14
USF30-8013	1	30	42	80	10	34	16°	25	21	17
USF30-8014	1	30	38	65	6	32	15°	26	22	18
USF32-8015	2	32	45	75	8	34	15°	26	22	18
USF32-8016	1	32	42	85	6	32	13°	26	22	18
USF32-8026	1	32	40	65	6	34	15°	26	22	18
USF34-8017	1	34	44	80	10	37	16°	28	24	20
USF37-8018	2	37	44	91	5.7	38	16°	32	27	22
USF37-8019	1	37	47	92	10	40	16°	32	27	22
USF37-8025	1	37	47	92	10	40	16°7'	32	27	22

* table to be continued

Collet with Straight & Tapered Shoulder



Collet with Straight & Tapered Shoulder

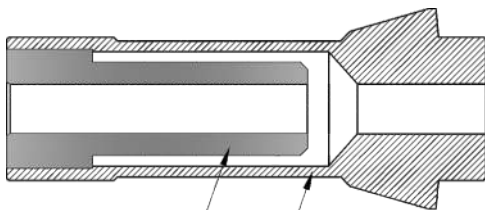
All Dimension are in mm - Unless Otherwise Specified

Tecnicrafts Part Nr.	Fig.	Guiding Dia	Major Dia	Total Length	Nose Length	Nose Dia	Angle	Capacity		
								Round	Hexagon	Square
		ØA	ØB	C	E	ØF	a°	●	⬡	■
USF40-8020	1	40	50	92	10	43	16°	35	30	24
USF43-8021	1	43	53	92	10	46	16°	38	32	27
USF44-8022	1	44	52	92	10	44	16°30'	38	32	27
USF48-8023	1	48	54	100	10	44	15°	40	34	28
USF48-8024	2	48	60	94	9	50	15°	42	36	29
USF54-8027	2	54	64	95	10	54	15°	45	38	31



Collets - V Line

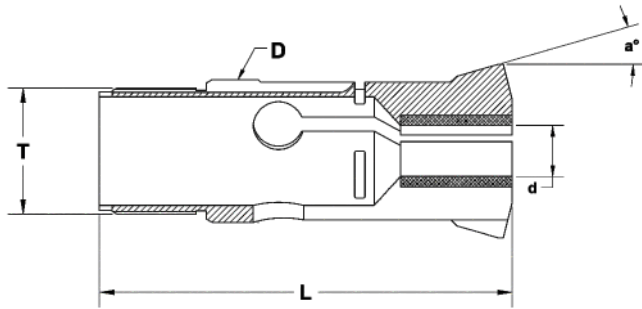
- Available only above Ø 3.0mm
- Offered only in "Smooth Bore"
- No marks on material while clamping
- Suitable for all profiles like Square, Hexagon, etc.,
- Uniform High Tension
- Easier Cleaning after Operation



Collet with Brass Guide

- All the Collets available with Brass Guide on Request
- Brass Guide provides better guidance to the job

Carbide Lined Guide Bush - Traub

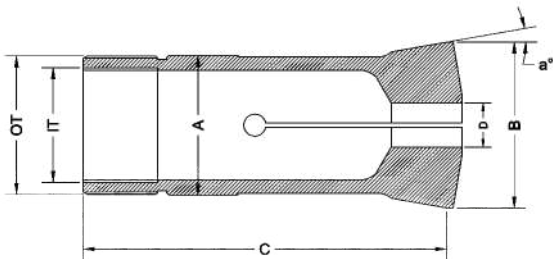


Carbide Lined Guide Bush - Traub

All Dimension are in mm - Unless Otherwise Specified

Tecnicrafts Part No.	Guiding Dia	Total Length	Thread	Angle	Capacity		
					Round	Hexagon	Square
	ØD	L	T	a°	●	⬡	■
R21/07	21	65.5	M18x1	12°	13.5	11	9
R27/01	27	67.5	M24x1	12°	18	15	13
R28/06	28	81.2	M25x1	16°	20.5	17	14
R42/05	42	81.2	M40x1	16°	33	28	23

5C / 16C Collets

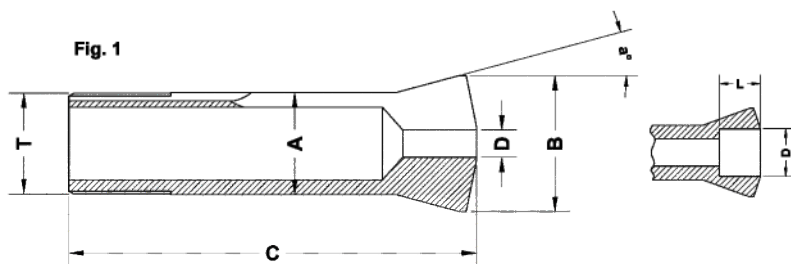


SPECIAL COLLETS - 5C / 16C COLLETS

All Dimension are in mm - Unless Otherwise Specified

Part Nr.	Guiding Dia	Major Dia	Total Length	OD Thread	ID Thread	Angle	Capacity		
							Round	Hexagon	Square
	ØA	ØB	C	OT	IT	a°	●	⬡	■
5C	1.25"(31.75)	1.484"(37.70)	3.268"(83.0)	1.238"x20TPI	1.041"x24TPI	10°	25	21	17
16C	1.889"(48.0)	2.260"(57.40)	4.291"(109.5)	1.870"x1.75	1.687"x20TPI	10°	41	35	29

W - Type Collet



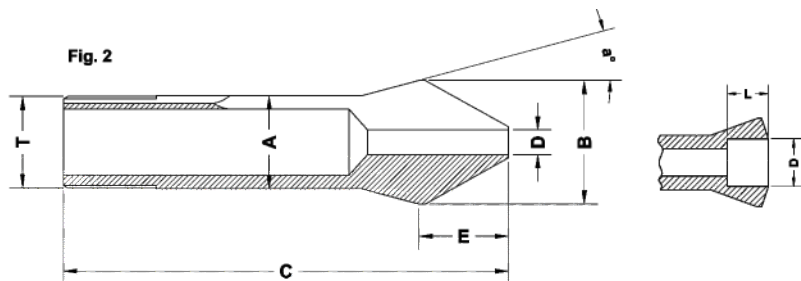
W - TYPE COLLETS

All Dimension are in mm - Unless Otherwise Specified

Part Nr.	Guiding Dia	Major Dia	Total Length	Thread	Nose Length	Angle	Figure	Length	Capacity
									D Min - Max
	ØA	ØB	C	T	E	a°		L	
SW10/001	10	14	43.6	Ø9.83x0.833 <) 45°/5°	-	15°	1	-	1.00...6.70
								15	6.71...8.00
								6	8.01...8.50
								5	8.51...9.00
								4	9.01...9.50
								3	9.51...10.00
SW12/002	12	16	46	Ø11.75x1.25 <) 45°/5°	-	15°	1	-	1.00...8.00
								17	8.01...10.00
								6	10.01...10.50
								5	10.51...11.00
								4	11.01...11.50
								3	11.51...12.00
SW12/93108	12	16	52	Ø11.75x1.25 <) 45°/5°	8.8	15°	2	-	1.00...8.00
								24	8.01...10.00
SW15/003	15	20.2	58.3	Ø14.75x1.25 <) 45°/5°	-	15°	1	-	1.00...10.70
								22	10.71...12.70
								9.5	12.71...13.00
								8.5	13.01...13.50
								7.5	13.51...14.00
								6.5	14.01...14.50
								5.5	14.51...15.00
								4.5	15.01...15.50
3.5	15.51...16.00								
SW15/93285	15	20.2	67	Ø14.75x1.25 <) 45°/5°	12	15°	2	-	1.00...10.20
								22	10.21...12.70
SW20/004	20	26.3	73	Ø19.7x1.666 <) 45°/5°	-	15°	1	-	1.00...14.50
								28	14.51...16.00
								13.5	16.01...16.50
								13	16.51...17.00
								12.2	17.01...17.50
								11.5	17.51...18.00
								10.7	18.01...18.50
								10	18.51...19.00
8.7	19.01...19.50								

* table to be continued

W - Type Collet

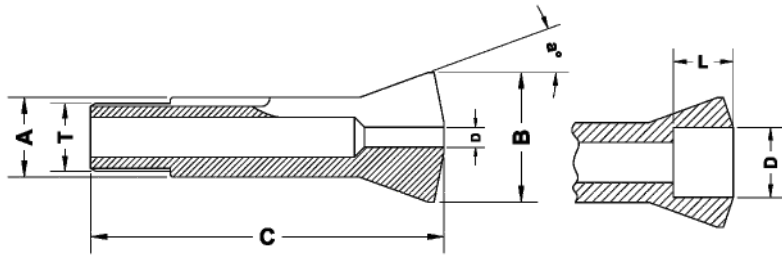


W - TYPE COLLETS

All Dimension are in mm - Unless Otherwise Specified

Part Nr.	Guiding Dia	Major Dia	Total Length	Thread	Nose Length	Angle	Figure	Length	Capacity
									D Min - Max
	ØA	ØB	C	T	E	a°		L	
SW20/004	20	26.3	73	Ø19.7x1.666 (<) 45°/5°	-	15°	1	7.5	19.51...20.00
								6.5	20.01...20.50
								5.5	20.51...21.00
								4.7	21.01...21.50
								4	21.51...22.00
								3	22.01...22.50
SW20/92744	20	26.3	84.5	Ø19.7x1.666 (<) 45°/5°	15.5	15°	2	-	1.00...13.00
								41	13.01...16.00
SW25/005	25	33.7	97.6	Ø24.7x15f" (<) 45°/5°	-	15°	1	-	1.00...19.05
								35	19.06...21.00
								16.5	21.01...21.50
								16	21.51...22.00
								15.7	22.01...22.50
								15.5	22.51...23.00
								15	23.01...23.50
								14.5	23.51...24.00
								13.5	24.01...24.50
								12.5	24.51...25.00
								11.5	25.01...25.50
								10.5	25.51...26.00
								9.5	26.01...26.50
SW25/92872	25	33.7	112.2	Ø24.7x15f" (<) 45°/5°	19.7	15°	2	-	1.00...19.05
								50	19.06...21.00
SW31.75/842	31.75	37.4	87	Ø31.4x20f" (<) 60°	-	10° 3'	1	-	1.00...25.19
								40	25.20...27.99
								10	28.00...28.99
								7	29.00...29.99
								4	30.00...31.00

B - Type Collet



B - TYPE COLLETS

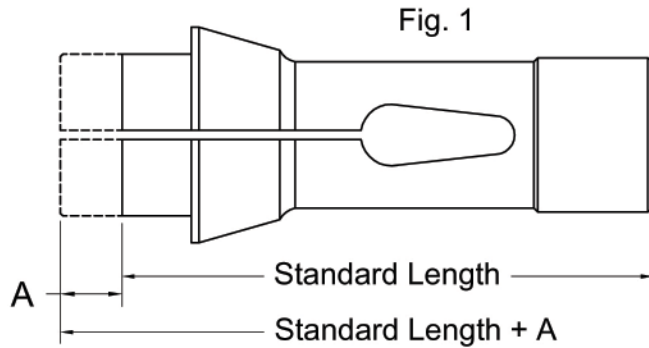
All Dimension are in mm - Unless Otherwise Specified

Part Nr.	Guiding Dia	Major Dia	Total length	Thread	Angle	Length	Capacity
							D Min - Max
	ØA	ØB	C	T	a°	L	ØD
SB6/128	6	10.5	31.3	Ø5x36f" (<) 55°	20°	-	1.00...3.00
						12	3.01...4.50
						4.5	4.51...5.00
						4	5.01...5.50
						3.5	5.51...6.00
SB8/137	8	13	35.5	Ø6.82x0.625 (<) 55°	20°	-	1.00...4.00
						12.5	4.01...6.50
						6	6.51...7.00
						5	7.01...7.50
						4	7.51...8.00
						3.2	8.01...8.50
						2.5	8.51...9.00
						1.7	9.01...9.50
1	9.51...10.00						
SB15/139	15	21	55	M13 x 1	20°	-	1.00...9.50
						20	9.51...12.50
						8.5	12.51...13.00
						7.7	13.01...13.50
						7	13.51...14.00
						6.5	14.01...14.50
6	14.51...15.00						
SB32/55	32	40	102	M30 x 1.5	15°	-	1.00...24.00
						44	24.01...28.00
						12	28.01...30.00
						8	30.01...32.00
SB32/65	32	40	106	Ø29.7x15f" (<) 45°/5°	15°	-	1.00...24.00
						44	24.01...28.00
						12	28.01...30.00
						8	30.01...32.00
SB45/199	45	53	115	M42 x 1.5	15°	-	1.00...36.00
						53	36.01...40.99
						14	41.00...41.99
						12	42.00...42.99
						10	43.00...43.99
						8	44.00...45.00

Ordering Information for Long Nose Collets / Guide Bushes

Machine Make & Model	
Collet / Guide Bush Part Number	

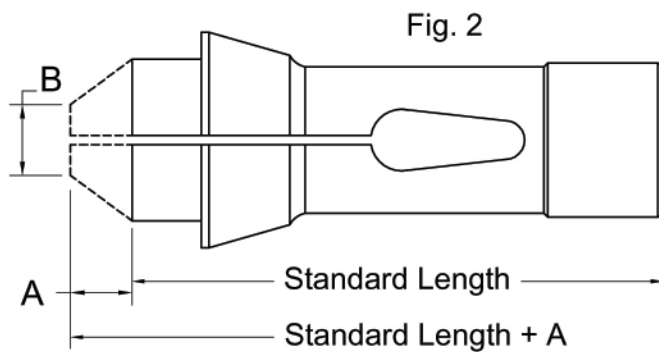
Collets - Extended Nose



Straight Nose
Extended Nose Collet

A : _____

Bore Dia : _____



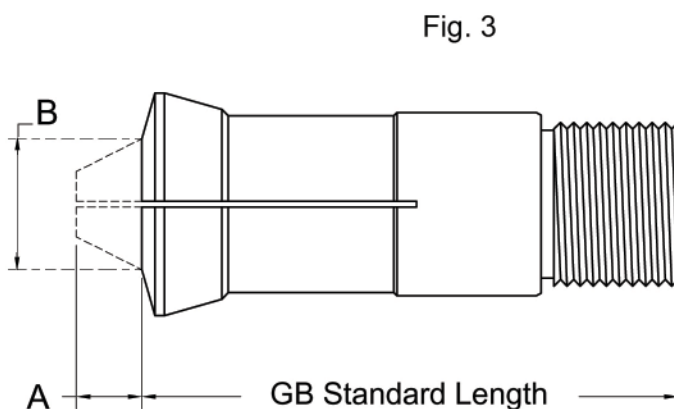
Tapered Nose
Extended Nose Collet

A : _____

B : _____

Bore Dia : _____

Guide Bush - Extended Nose



Extended Nose Guide Bush

A : _____

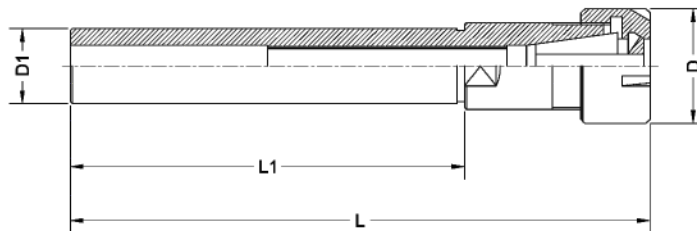
B : _____

Bore Dia : _____



- Range of Cylindrical ER Collet Shanks made from high quality special steels under controlled process
- The Shank is made to h6 standards for providing higher accuracy and tool life
- The Run-out is maintained within 0.005mm from shank dia to ERcavity taper
- Used for a wide range of tool holding application in Maching centers, Swiss type automatic lathes for drilling, milling application
- Wide Variety of shanks types - including Round, Round with flat in Single / Double ends offered in both metric and Inch Sizes
- These Cylindrical shanks are supplied with clamping nuts (without ER Collet)
- The shanks can be provided with back-up screw - upon request

ER Cylindrical Holder



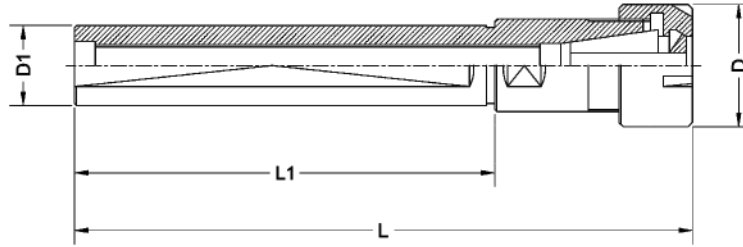
Single End - ER Cylindrical Holders with Mini Nut - Inch series

Part Nr.	ØD mm	ØD1 mm	L mm	L1 mm
ERS/SE-3/8" x 070 / ER 8 M	12	9.52	93.0	70
ERS/SE-1/2" x 140 / ER 11 M	16	12.7	169.5	140
ERS/SE-1/2" x 140 / ER 16 M	22	12.7	177.0	140
ERS/SE-5/8" x 150 / ER 11 M	16	15.87	172.5	150
ERS/SE-3/4" x 155 / ER 16 M	22	19.05	181.5	155
ERS/SE-3/4" x 100 / ER 16 M	35	19.05	147.0	100
ERS/SE-1" x 155 / ER 20 M	28	25.5	181.5	155

Single End - ER Cylindrical Holders with Mini Nut - Metric series

Part Nr.	ØD mm	ØD1 mm	L mm	L1 mm
ERS/SE 06 x 045 / ER 11 M	16	6	71.5	45
ERS/SE 07 x 045 / ER 11 M	16	7	71.5	45
ERS/SE 08 x 080 / ER 8 M	12	8	106.0	80
ERS/SE 08 x 056 / ER 11 M	16	8	82.5	56
ERS/SE 10 x 060 / ER 16 M	22	10	98.5	60
ERS/SE 12 x 080 / ER 8 M	12	12	97.0	80
ERS/SE 12 x 080 / ER 16 M	22	12	118.5	80
ERS/SE 15 x 100 / ER 20 M	28	15	142.5	100
ERS/SE 16 x 150 / ER 11 M	16	16	171.0	150
ERS/SE 16 x 100 / ER 20 M	28	16	142.5	100
ERS/SE 20 x 155 / ER 16 M	22	20	181.5	155
ERS/SE 25 x 155 / ER 20 M	28	25	181.5	155

ER Cylindrical Holder



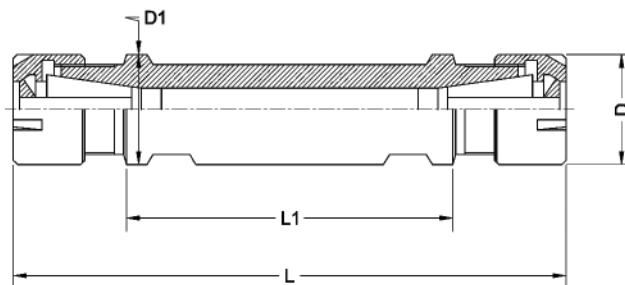
Single End - ER Cylindrical Holders - Flat with Mini Nut - Inch series

Part Nr.	ØD mm	ØD1 mm	L mm	L1 mm
ERS/SE-F- 5/8" x 043 / ER 8 MF	12	15.875	58	43
ERS/SE-F- 3/4" x 115 / ER 11 MF	16	19.05	135	115
ERS/SE-F- 3/4" x 050 / ER 16 MF	22	19.05	78	50
ERS/SE-F- 3/4" x 070 / ER 16 MF	22	19.05	98	70
ERS/SE-F- 3/4" x 120 / ER 16 MF	22	19.05	148	120
ERS/SE-F- 1" x 075 / ER 16 MF	22	25.4	103	75
ERS/SE-F- 1" x 100 / ER 16 MF	22	25.4	128	100
ERS/SE-F- 1" x 100 / ER 20 MF	28	25.4	128	100
ERS/SE-F- 1" x 140 / ER 20 MF	28	25.4	168	140

Single End - ER Cylindrical Holders - Flat with Mini Nut - Metric series

Part Nr.	ØD mm	ØD1 mm	L mm	L1 mm
ERS/SE-F- 16 x 038 / ER 11 MF	16	16	58	38
ERS/SE-F- 16 x 140 / ER 11 MF	16	16	160	140
ERS/SE-F- 20 x 050 / ER 16 MF	22	20	78	50
ERS/SE-F- 20 x 120 / ER 16 MF	22	20	148	120
ERS/SE-F- 20 x 140 / ER 16 MF	22	20	148	140
ERS/SE-F- 22 x 038 / ER 16 MF	22	22	66	38
ERS/SE-F- 22 x 070 / ER 16 MF	22	22	98	70
ERS/SE-F- 22 x 100 / ER 16 MF	22	22	128	100
ERS/SE-F- 22 x 080 / ER 20 MF	28	22	119	80
ERS/SE-F- 22 x 070 / ER 25 MF	35	22	117	70
ERS/SE-F- 25 x 065 / ER 16 MF	22	25	93	65
ERS/SE-F- 25 x 100 / ER 20 MF	28	25	128	100
ERS/SE-F- 25 x 154 / ER 20 MF	28	25	182	154
ERS/SE-F- 25 x 075 / ER 25 MF	35	25	122	75
ERS/SE-F- 25 x 145 / ER 25 MF	35	25	181	145
ERS/SE-F- 32 x 070 / ER 25 MF	35	32	100	70

ER Cylindrical Holder



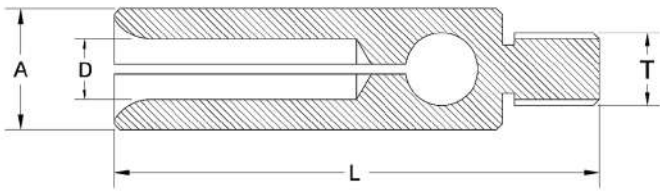
Double End - ER Cylindrical Holders - Flat with Mini Nut - Inch series

Part Nr.	ØD mm	ØD1 mm	L mm	L1 mm
ERS/DE-F- 5/8" x 015 / ER 8 MF	12	15.875	45	15
ERS/DE-F- 5/8" x 025 / ER 8 MF	12	15.875	55	25
ERS/DE-F- 3/4" x 040 / ER 11 MF	16	19.05	80	40
ERS/DE-F- 3/4" x 070 / ER 11 MF	16	19.05	110	70
ERS/DE-F- 3/4" x 090 / ER 11 MF	16	19.05	130	90
ERS/DE-F- 3/4" x 055 / ER 16 MF	22	19.05	107	55
ERS/DE-F- 1" x 062 / ER 16 MF	22	25.4	118	62

Double End - ER Cylindrical Holders - Flat with Mini Nut - Metric series

Part Nr.	ØD mm	ØD1 mm	L mm	L1 mm
ERS/DE-F-16 x 050 / ER 11 MF	16	16	90	50
ERS/DE-F-20 x 030 / ER 11 MF	16	20	70	30
ERS/DE-F-20 x 050 / ER 11 MF	16	20	90	50
ERS/DE-F-20 x 055 / ER 16 MF	22	20	107	55
ERS/DE-F-22 x 055 / ER 16 MF	22	22	111	55
ERS/DE-F-22 x 075 / ER 16 MF	22	22	131	75
ERS/DE-F-25 x 062 / ER 16 MF	22	25	118	62
ERS/DE-F-32 x 055 / ER 20 MF	28	32	111	55
ERS/DE-F-32 x 075 / ER 20 MF	28	32	131	75

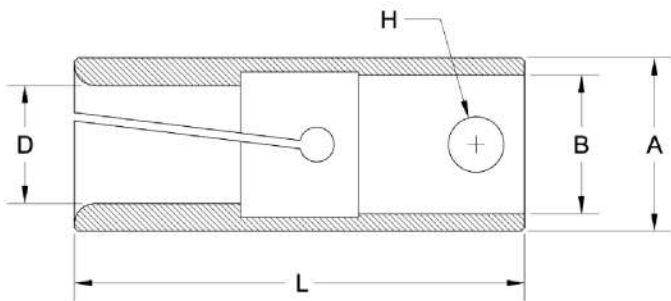
Bar Feeder - Collets



Citizen CAV Bar Feed Collets

All Dimension are in mm - Unless Otherwise Specified

Tecnicrafts Part Nr.	Others Part Nr.	Barfeeder Model	Guiding Dia	Length	Thread	Range in inch
			ØA	L	T	
BF7/02	FC7D-L	CAV16/20L-IS	7	40	6 x 1 LH	0.062 - 0.200"
BF10/01	FC10D-L	CAV12M-IS	10	40	6 x 1 LH	0.078 - 0.315"
BF12/02	FC12D-L	CAV12M-IS	12	40	6 x 1 LH	0.300 - 0.400"

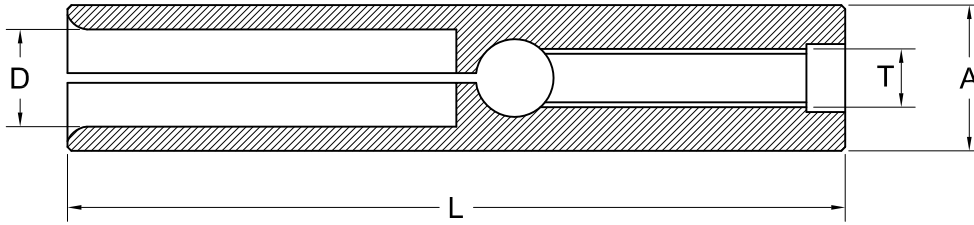


Citizen CAV - Bar loader Collets

All Dimension are in mm - Unless Otherwise Specified

Tecnicrafts Part Nr.	Others Part Nr.	Barfeeder Model	Guiding Dia	Bore Dia	Length	Pin Hole Dia	Range in inch
			ØA	ØB	L	ØH	
BF15/01	CIT15NF	CAV16/20L-IS	15	10	55	6	0.118 - 0.546
BF17/03	CIT17NF	CAV16/20L-IS	17	10	55	6	0.546 - 0.629
BF19/02	CIT19NF	CAV20L-IS	19	10	57	6	0.629 - 0.669
BF20/05	CIT21NF	CAV20L-IS	20.1	10	56	6	0.669 - 0.708
BF25/03	FC25NF		25	16	76	8	0.200 - 0.875
BF32/06	FC32NF		32	16	76	8	0.625 - 1.140
BF34/03	FC34NF		34	16	76	8	0.750 - 1.215

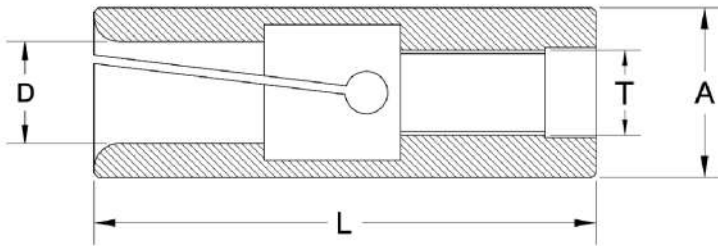
Bar Feeder - Collets



Citizen CAV Bar Feed Collets

All Dimension are in mm - Unless Otherwise Specified

Tecnicrafts Part Nr.	Others Part Nr.	Barfeeder Model	Guiding Dia	Length	Thread	Range in mm
			ØA	L	T	
BF4.5/01	AL4.5L		4.5	27	3 x 0.5 LH	0.04 - 0.120
BF5.5/02	AL5.5L		5.5	27	3 x 0.5 LH	0.04 - 0.150

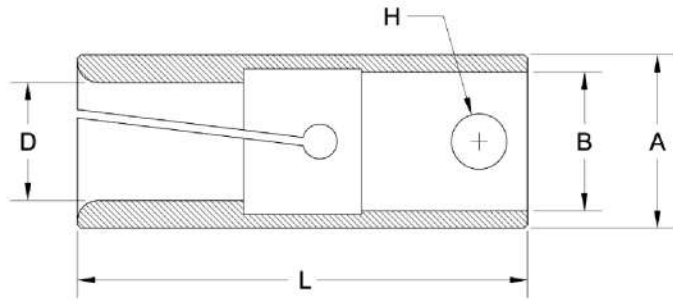


CNC (Formerly MTA) Bar Feed Collets for Eagle / Sunny 542, Eagle 545, Tracer 32

All Dimension are in mm - Unless Otherwise Specified

Tecnicrafts Part Nr.	Others Part Nr.	Barfeeder Model	Guiding Dia	Thread	Range in mm
			ØA	T	
BF20/04	FEDEK 20		20	60 10 x 1 L.H.	0.100 - 0.700"
BF27/04	FEDEK 27		27	57 10 x 1 L.H.	0.200 - 0.937"
BF30/06	FEDEK 30		30	65 17 x 1 L.H.	0.200 - 1.062"
BF32/02	FEDEK 31.5		32	80 25 x 1.5 L.H.	0.200 - 1.140"
BF42/04	FEDEK 41.5		42	80 25 x 1.5 L.H.	0.500 - 1.500"
BF45/01	FEDEK 45		45	80 25 x 1.5 L.H.	0.500 - 1.650"

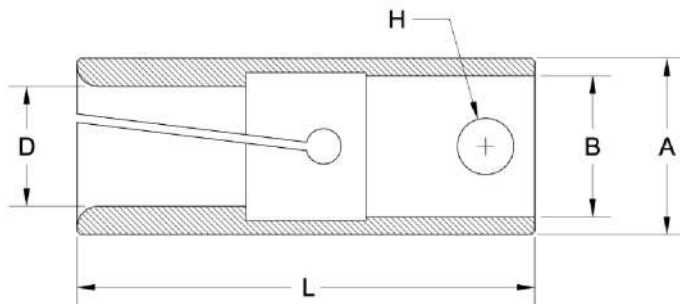
Bar Feeder - Collets



CNC (Formerly MTA) Bar Feed Collets for Mini Swiss and Tracer

All Dimension are in mm - Unless Otherwise Specified

Tecnicrafts Part Nr.	Others Part Nr.	Guiding Dia	Bore Dia	Length	Pin Hole Dia	Range in inch
		$\varnothing A$	$\varnothing B$	L	$\varnothing H$	
BF12/05	12D	12	8	40	4	0.100 - 0.400"
BF15/06	15D	15	11	40	6	0.125 - 0.500"
BF20/06	20D	20	14	65	8	0.125 - 0.700"
BF25/02	25D	25	20	65	8	0.200 - 0.900"

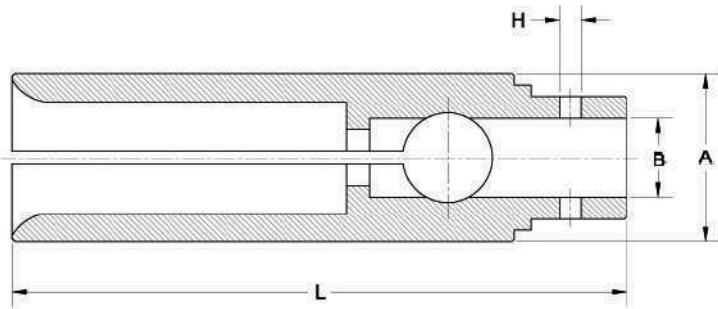


FMB Bar Feed Collets - Style D

All Dimension are in mm - Unless Otherwise Specified

Tecnicrafts Part Nr.	Others Part Nr.	Guiding Dia	Bore Dia	Length	Pin Hole Dia	Range in inch
		$\varnothing A$	$\varnothing B$	L	$\varnothing H$	
BF05/03	5D	5	M4x0.70	28		0.050 - 0.150"
BF07/05	7D	7	M5x0.80	28		0.050 - 0.220"
BF10/02	10D	10	7	40	4	0.050 - 0.320"
BF12/05	12D	12	8	40	4	0.090 - 0.400"
BF15/06	15D	15	11	40	6	0.100 - 0.510"
BF18/01	18D/15	18	11	40	6	0.200 - 0.625"
BF18/08	18D/NS	18	11	65	8	0.200 - 0.625"
BF18/09	18D	18	14	65	8	0.200 - 0.625"
BF20/06	20D	20	14	65	8	0.100" - 0.675"
BF22/02	22D/20	22	14	65	8	0.200 - 0.750"
BF25/02	25D	25	20	65	8	0.200 - 0.875"
BF28/01	28D	28	20	65	8	0.500 - 1.000"
BF32/07	32D	32	20	95	8	0.625 - 1.140"

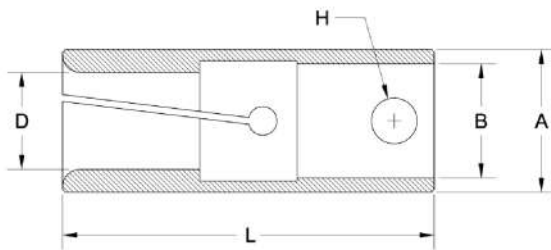
Bar Feeder - Collets



Ikura Bar Feed Collets

All Dimension are in mm - Unless Otherwise Specified

Tecnicrafts Part Nr.	Others Part Nr.	Guiding Dia	Bore Dia	Length	Pin Hole Dia	Range in inch
		ØA	ØB	L	ØH	
BF15/10	FC15F	15	7	55	2	0.100 - 0.500"
BF17/04	FC17F	17	9	55	2	0.100 - 0.590"
BF19/04	FC19F	19	10	57	2	0.100 - 0.650"

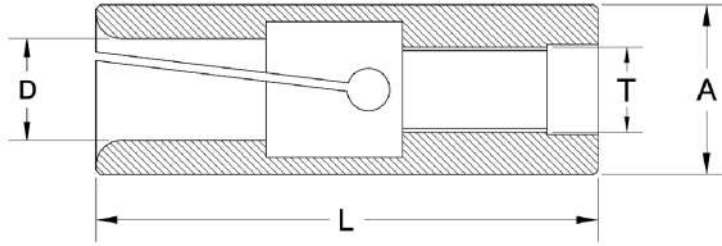


LNS Bar Feed Collets - Style D

All Dimension are in mm - Unless Otherwise Specified

Tecnicrafts Part Nr.	Others Part Nr.	Guiding Dia	Bore Dia	Length	Pin Hole Dia	Range in inch
		ØA	ØB	L	ØH	
BF06/01	LN6D	6	4 x .7	30	---	0.070 - 0.175"
BF07/06	LN7D	7	5 x .8	37	---	0.120 - 0.200"
BF10/02	10D	10	7	40	4	0.200 - 0.315"
BF12/05	12D	12	8	40	4	0.250 - 0.400"
BF14/03	LN14D	14	8	40	4	0.320 - 0.475"
BF15/06	15D	15	11	40	6	0.400 - 0.500"
BF18/01	18D/15	18	11	40	6	0.520 - 0.625"
BF20/06	20D	20	14	65	8	0.525 - 0.700"
BF21/02	LN21D	21	14	65	8	0.550 - 0.750"
BF22/02	22D/20	22	14	65	8	0.630 - 0.800"
BF25/02	25D	25	20	65	8	0.710 - 0.900"
BF27/05	LN27D	27	20	65	8	0.830 - 0.950"
BF28/01	28D	28	20	65	8	0.890 - 1.000"
BF30/02	LN30D	30	20	65	8	0.985 - 1.100"
BF32/05	LN32D	32	20	65	8	0.985 - 1.150"

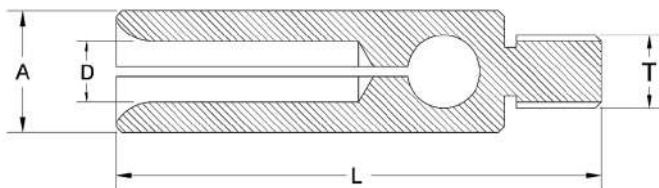
Bar Feeder - Collets



IEMCA Bar Feed Collets

All Dimension are in mm - Unless Otherwise Specified

Tecnicrafts Part Nr.	Others Part Nr.	Barfeeder Model	Guiding Dia	Length	Thread	Range in mm
			ØA	L	T	
BF7.5/02	IEMCA #7.5		7.5	40	5 x 0.5	3 - 6
BF10/04	IEMCA #10		10	40	6 x 0.75	3 - 8
BF12/06	IEMCA #12		12	42	7 x 0.75	4 - 10
BF15/02	IEMCA #15		15	42	8 x 1	5 - 13
BF18/07	IEMCA #18		18	42	8 x 1	7 - 16
BF20/03	IEMCA #20		20	59	10 x 1	7 - 18
BF23/04	IEMCA #22.5		23	59	10 x 1	7 - 20.50
BF25/06	IEMCA #25		25	59	10 x 1	8 - 23
BF27/02	IEMCA #27		27	65	10 x 1	8 - 25
BF32/04	IEMCA #32		32	80	25 x 1.5	10 - 30
BF42/08	IEMCA #42		42	80	25 x 1.5	10 - 38
BF45/03	IEMCA #45		45	80	25 x 1.5	10 - 41

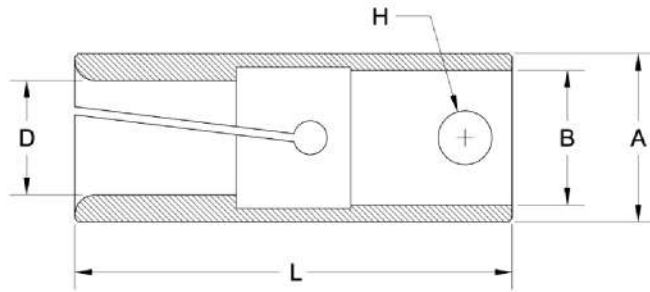


Ikura Bar Feed Collets

All Dimension are in mm - Unless Otherwise Specified

Tecnicrafts Part Nr.	Others Part Nr.	Barfeeder Model	Guiding Dia	Length	Thread	Range in mm
			ØA	L	T	
BF8/01	FC8D	IBF-10NHE	8	40	6 x 1 LH	0.050 - 0.250"
BF8/01	FC8D	IBF-12NHE	8	40	6 x 1 LH	0.050 - 0.250"
BF10/01	FC10D	IBF-10NHE	10	40	6 x 1 LH	0.075 - 0.315"
BF12/02	FC12D	IBF-12NHE	12	40	6 x 1 LH	0.100 - 0.400"
BF14/02	FC14D	IBF-14NHE	14	40	6 x 1 LH	0.100 - 0.450"

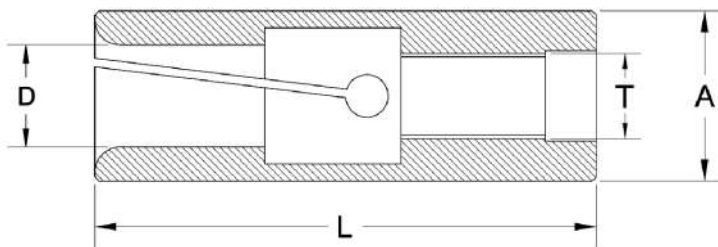
Bar Feeder - Collets



Robobar Bar Feed Collets

All Dimension are in mm - Unless Otherwise Specified

Tecnicrafts Part Nr.	Others Part Nr.	Guiding Dia	Bore Dia	Length	Pin Hole Dia	Range in inch
		$\varnothing A$	$\varnothing B$	L	$\varnothing H$	
BF05/03	5D	5	M4x0.70	28	-	0.050 - 0.150"
BF07/05	7D	7	M5x0.80	28	-	0.050 - 0.220"
BF10/02	10D	10	7	40	4	0.050 - 0.320"
BF12/05	12D	12	8	40	4	0.090 - 0.400"
BF15/06	15D	15	11	40	6	0.100 - 0.510"
BF18/09	18D	18	14	65	6	0.200 - 0.625"
BF20/06	20D	20	14	65	8	0.100" - 0.675"
BF25/02	25D	25	20	65	8	0.200 - 0.875"
BF28/01	28D	28	20	65	8	0.500 - 1.000"



STAR Bar Feed Collets

All Dimension are in mm - Unless Otherwise Specified

Tecnicrafts Part Nr.	Others Part Nr.	Barfeeder Model	Guiding Dia	Length	Thread	Range in mm
			$\varnothing A$	L	T	
BF10/11	AL10L	-	10	40	M6x1 LH	0.050 - 0.320"
BF16/01	AL16L	-	16	73	M10x1 LH	0.050 - 0.550"

We constantly upgrade our products and therefore the specifications contained in our Catalog are only for guidance purpose and are subject to change without notice.

Options for collets



Collet - Smooth Bore



Collet with Carbide Insert



Collet - Grooved Bore



Collet with Silicone Seal



Collet - Serrated Bore



Collet - V - Line



Collet - Stepped Bore



Collet with Key on Cone



Collet - Square Bore



Collet with Key on Guiding Dia



Collet - Rect., Bore

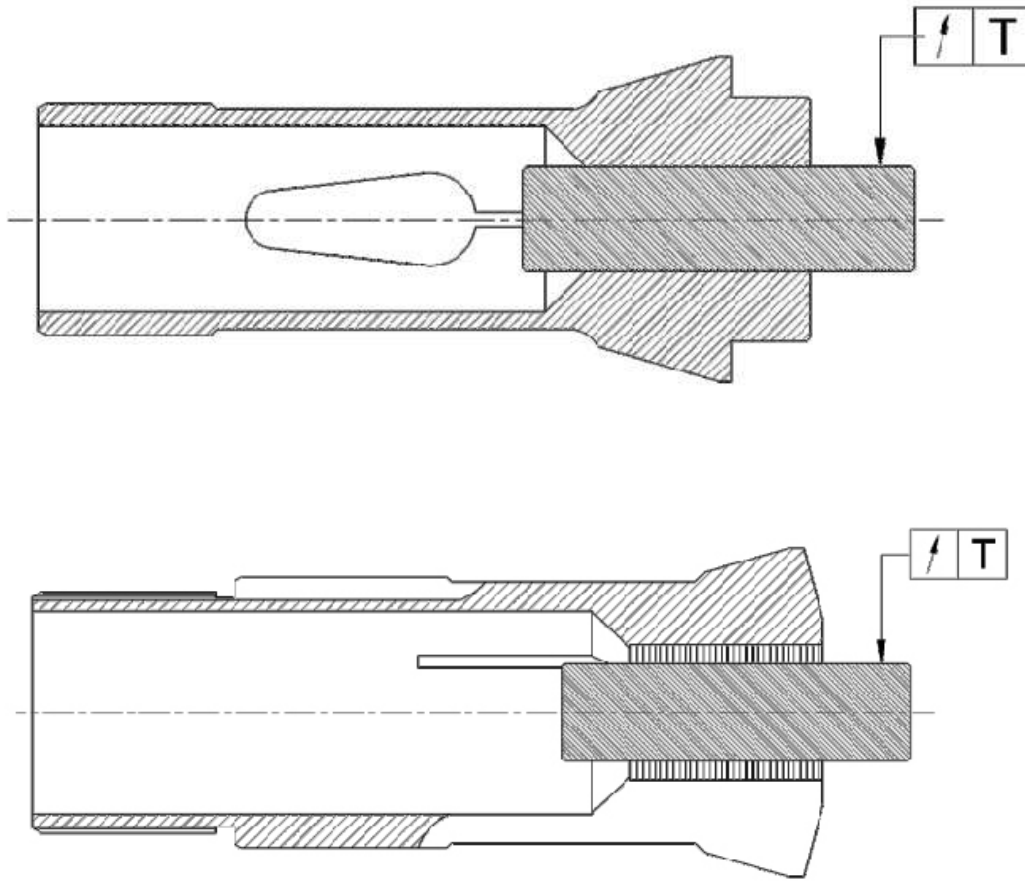


Collet - Hexagon Bore



Collet - Special Bore

Run - Out Tolerance



Run Out Tolerance

All Dimension are in mm - Unless Otherwise Specified

Bore Size	Round Bores (T Maximum)		Hex. / Sq. Bores (T Maximum)	
	Standard Precision	Ultra Precision	Standard Precision	Ultra Precision
1.00 - 10.00	0.010	0.005	0.060	0.030
10.01 - 20.00	0.015	0.008	0.060	0.040
20.01 - 30.00	0.020	0.010	0.060	0.040
30.01 - 40.00	0.025	0.012	0.060	0.040

Guide Bushes

Tecnibrafts Part Nr.	Others Part Nr.
UR9-101	PD4
UR11-102	TD7
UR11-103	SW7
UR14-104	P853D
UR16-105	P1053D
UR16-106	TD10
UR16-107	TD10T
UR18-108	SD125R
UR18-109	TD18T
UR21-110	SNC15
UR21-111	TRB468
UR22-112	P1653D
UR22-113	TD20
UR22-114	TD20R
UR23-115	TSG20R
UR26-116	TD26
UR28-117	TD25
UR28-118	TD25S
UR28-119	TD25NS
UR30-120	NN20KD
UR32-121	TSD20
UR33-122	TD33
UR34-123	CD25
UR36-124	P2553D
UR41-125	BS32B
UR42-126	TD32S
UR42-127	TD32
UR45-128	TD45
UR46-129	TD38
UR48-130	STM38
UR24-131	0201
UR52-132	

Collets

Tecnibrafts Part Nr.	Others Part Nr.
USF8-8001	TF8
USF10-8002	TF10
USF13-8003	TF13
USF15-8004	TF15
USF16-8005	TF16
USF20-8006	F20-201
USF20-8007	TF20
USF22-8008	TF22
USF23.8-8009	TF24
USF25-8010	TF25
USF25-8011	156
USF26-8012	NN20KFC
USF30-8013	TF30
USF30-8014	161
USF32-8015	F32-221
USF32-8016	P2553C
USF34-8017	TF34
USF37-8018	BS32C
USF37-8019	TF37
USF40-8020	F40-SL35
USF43-8021	TF43
USF44-8022	TF44
USF48-8023	BS38
USF48-8024	TF48
USF37-8025	TF37SP
USF32-8026	166
USF54-8027	
SF33/9043	S25-HM(HARDINGE)



Platinum Tooling Technologies, Inc.

16 E. Piper lane, Suite 128
Prospect Heights, IL 60070

Phone: (847) 749 - 0633

E-mail: info@platinumtooling.com

Web: www.platinumtooling.com

